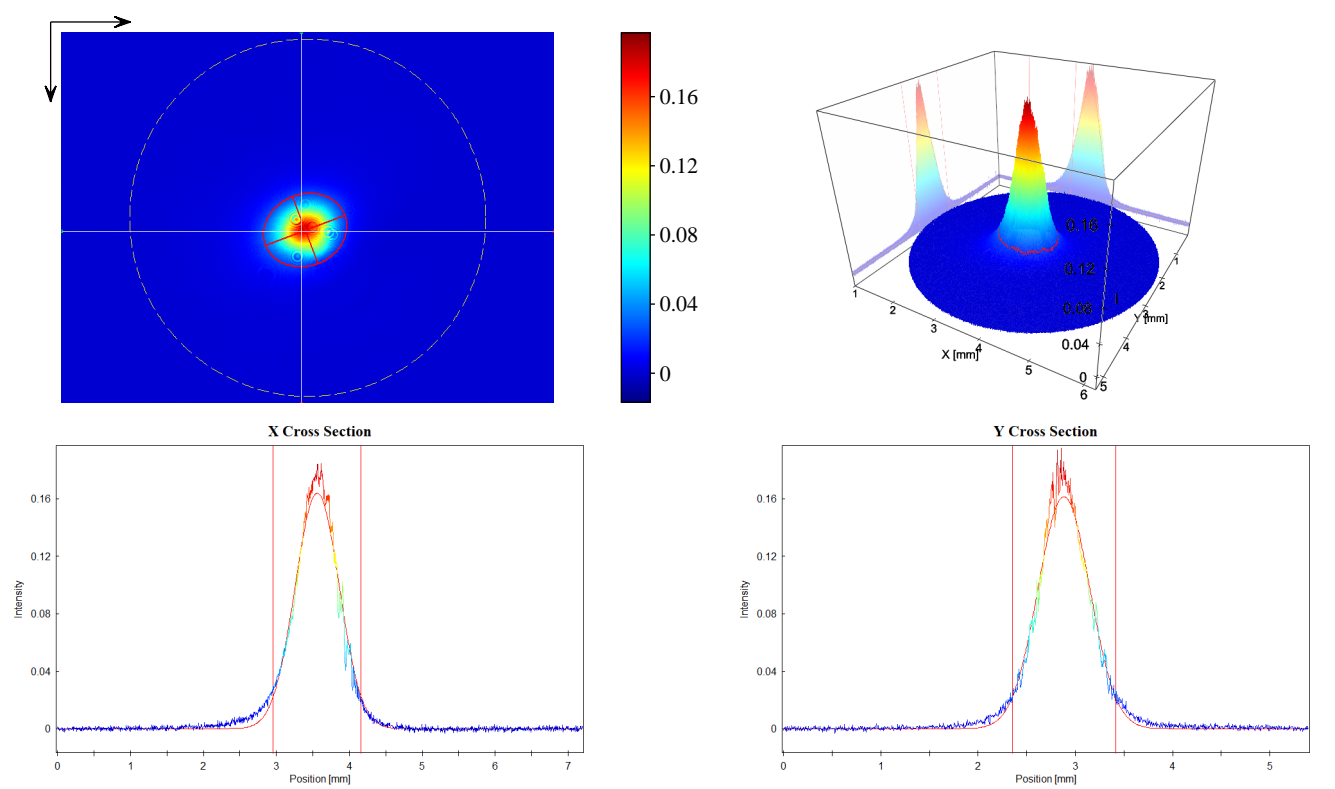


User:		Type:		Beam Attenuator:	
Camera:	CinCam CMOS 1203	Wavelength:	1064 nm	Beam Splitter:	
Serial:	1203-U2-4521-0117	Manufacturer:		Focusing Element:	
Accessory Type:	plain	Model:		Other Optical Units:	
Date:	2026/06/23 火曜日	Serial Number:		Laser Temp.:	
Type:	Single Measurement	Polarization:		Ambient Temp.:	
Frames:	24	Output Power:		Humidity:	
Frequency:		Operation Mode:	CW	Background:	yes
Pixel Size:	1600 x 1200	Pulse Energy:		Flat Field:	no
Comment:		Pulse Width:		Angular Response:	no
Exposure Time:	450 us	Pulse Frequency:		Baseline:	yes
Gain:	1.00 x	M^2:		Linearity:	no
Brightness:	invalid	Comment:			



Statistic

Number of Pixel:	644480
Power:	4990.
Peak:	0.1968
Peak Pos x:	3.560 mm
Peak Pos y:	2.871 mm
SNR:	45.9 dB

Gauss-Fit (13.53 % ~ 1/e^2)

Exponent:	2.00
Centroid x:	3.562 mm
Centroid y:	2.877 mm
--- Width Lab ---	
Width x:	1.217 mm
Width y:	1.071 mm
--- Width Beam ---	
Width Major:	1.240 mm
Width Minor:	1.045 mm
Azimuth Angle:	-20.73 deg
Ellipticity:	0.843
Eccentricity:	0.538

Cross-Sect. Area:	1.017 mm^2
Power Fraction:	84.77 %
GFI:	0.978
Correlation:	0.656